

Contents

- 1 Generalities**
 - 1.1 Guarantee conditions
 - 1.2 Customer service
 - 1.3 Limitation of liability
- 2 Safety**
 - 2.1 Persons
 - 2.2 Information symbols
 - 2.3 Proper use
 - 2.4 Personal protective equipment
 - 2.5 Power supply
 - 2.6 Animals
 - 2.7 Battery
 - 2.8 Blades
 - 2.9 Children
- 3 Technical Data**
 - 3.1 General information
 - 3.2 Mains voltage
 - 3.3 Operating conditions
- 4 Assembly and function**
 - 4.1 Scope of delivery
 - 4.2 Overview
 - 4.3 Abstract
 - 4.4 Operating elements
 - 4.5 Charging station
 - 4.6 Batteries
- 5 Transport, packaging and storage**
- 6 Operation**
 - 6.1 Initial start-up
 - 6.1.1 Setting up the charging station
 - 6.1.2 Charging the batteries
 - 6.1.3 Fitting the clipperhead
 - 6.2 Activities during operation
 - 6.2.1 Clipping
 - 6.2.2 Changing the battery
 - 6.2.3 Changing the clipperhead
 - 6.2.4 Lubrication
 - 6.2.5 Cleaning
- 7 Trouble shooting**
- 8 Spare parts**
- 9 Disposal**

1 Generalities

This manual facilitates a safe and efficient machine handling. Read these instructions carefully before starting operation. Basic requirements for a safe operation are the adherence of all the information regarding safety and operation in this manual. Keep this manual permanently. If you hand on the equipment to other persons, provide them with this manual.

1.1 Guarantee conditions

The guarantee conditions are included in the general terms and conditions of the manufacturer.

1.2 Customer service

For technical information, our customer service and our authorised service centres are at your disposal.

Furthermore, our staff is interested in new information and experience resulting from the operation which could be useful for the improvement of our products.

1.3 Limitation of liability

All data and information in this instruction manual were arranged in consideration of the current standards and regulations and state of the art as well as our realizations and experiences of many years.

The manufacturer assumes no liability for disadvantages due to:

- Nonobservance of the instruction manual
- Operation of the clipper for not intended use
- Assignment of not instructed personal
- Technical modifications
- Use of not approved spare parts

The actual scope of delivery can differ from specially designed models, from additional ordering options or due to the latest state of the art from the here described annotations and illustrations.

2 Safety

The nonobservance of the instructions and safety regulations mentioned in this manual can cause operating malfunctions or serious injury to persons.

2.1 Personal

- The operator must be experienced in handling the animals to be clipped.
- Children are not permitted to operate the equipment.

Operation of the clipper is only permitted by personal expected to do their work reliably. Persons, whose reactivity is affected by drugs, alcohol or pharmaceuticals, are not permitted to operate the equipment.



2.2 Information symbols

WARNING!

Indicates a potentially dangerous situation. If preventative action is not taken, death or very serious injury could result.



ATTENTION!

Indicates a potentially dangerous situation.



NOTE!

Indicates tips and informations.

2.3 Proper use

The equipment is exclusively designed and conceived for the here described use and intention.

The equipment is exclusively intended for use on dogs, cats, cattle and horses.

The compliance of all indications in this manual is part of the intended use.

Other uses are expressly prohibited.



WARNING!

Expressly prohibited are:

- Using the machine on persons.
- Clipping other animals, in particular dangerous animals such as beasts of prey.

2.4 Personal protective equipment

Antislip shoes. For protection against slipping on slippery underground.



2.5 Power supply

WARNING!

There is a danger of life in case of contact with life parts, therefore:

- If you unplug the plug, always pull directly on the plug. Never pull on the cable, it could get damaged.
- If the isolation is damaged, disconnect immediately the power supply and arrange repairation.
- Before connecting to the power supply, compare the technical data with the data of the power supply system and only connect in case of concordance.
- Only plug the charging station in undamaged outlets.
- Never wrap the cable around the machine and keep it away from hot underlays and objects.

- Keep humidity away from the machine. This can cause a short circuit.
- Never clip wet animals.
- Just clean the machine dryly with a brush and the cleaning brush.
- Generally, never plunge the clipper and clipperhead into liquids such as water, soapy water, diesel, petrol, etc. This may cause serious injury to mechanics and motor.
- Do not switch-on the clipper or the charging station if you suspect liquid to be penetrated. Hand it over to a service centre.

2.6 Animals



WARNING!

The noise of the clipper can trouble animals. A kick, an attack or the weight of the animal can cause serious injuries. Therefore:

- Just persons being experienced in handling with animals are allowed to clip the animals.
- Fix and calm the animal sufficiently before clipping.
- Work carefully.
- Unauthorised persons are not permitted to approach the clipping place.

2.7 Battery



WARNING!

Risk of injury when handling incorrectly with batteries!

Rechargeable batteries must be handled with especial care. Therefore:

- Just use original batteries.
- Do not throw the batteries into fire or expose them to high temperatures. There is a risk of explosion.
- Just use undamaged batteries.
- Never expose the batteries and charging station to solar irradiation and humidity.
- Never short-circuit the battery, because of overheating the battery can blow out.
- Never open the battery. In case of incorrect use, escaping liquid can cause skin irritation. Avoid any contact with the liquid of the battery. In case of contact wash up the liquid with a lot of water. If the liquid enters in the eyes, wash out immediately for 10 minutes and call on a doctor without delay.



ATTENTION!

Reduced durability of batteries when handling incorrectly!

When handling incorrectly, the capacity of the batteries will be reduced. Therefore:

- Just use the original charging station. Other charging stations could destruct the batteries.
- When not in use for a longer time, separate the charging station from the power supply.
- Remove the battery and clipper from the charging station, when the station is not connected to the power supply.

- Never insert any objects into any opening of the charging station or into the charging cavity of the clipper.
- Batteries who cannot be charged again cause damage to the charging station und must be replaced.

2.8 Blades



WARNING!

Moving blades and sharp edges of the blades can cause injuries on the skin. Therefore:

- Work carefully.
- Avoid any contact with the moving blades.

2.9 Children



WARNING!

Never let the equipment unsupervised und use it very carefully when children or persons who cannot judge the dangers are nearby.

3 Technical Data

3.1 General information

Clipper	Length	204 mm
	Width	50 mm
	Height	41 mm
	Weight with battery	0,44 kg
Charging station	Charging time at 20 °C	45 min
Battery	Type	Li-Ion
	Voltage	7,4 V
	Capacity	1400 mAh

3.2 Mains voltage

Electrical (charging station)	Voltage	100–240 V
	Charging rate, maximum	1,6 A

3.3 Operating conditions

Environment	Temperature range	0–40 °C
	Relative humidity, maximum	75 %

4 Assembly and function

4.1 Scope of delivery

Clipper with clipperhead	1 pce
Spare battery (equipment-oriented)	1 pce
Charging station	1 pce
Oil dispenser	1 pce
Cleaning brush	1 pce
Instruction manual	1 pce
Case for transport and storage	1 pce

4.2 Overview

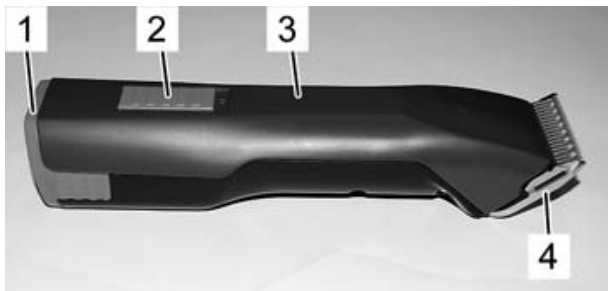


fig. 1

- 1 Battery
- 2 Switch
- 3 Clipper
- 4 Clipperhead
- 5 Interlock clipperhead
- 6 Interlock battery



fig. 2

4.3 Abstract

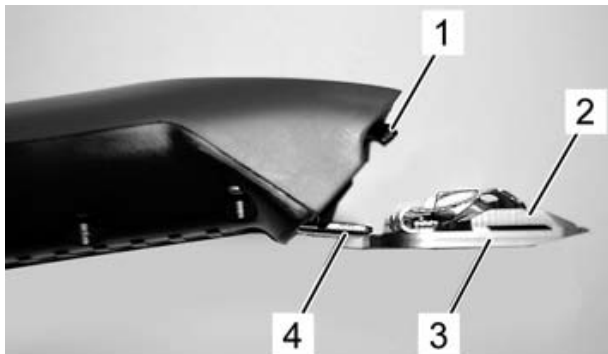


fig. 3

The clipper serves to clip dogs, cats, cattle and horses. Two comb-shaped blades are the cutting tool. The bottom blade facing the skin (3) is standing firm and is fixed on the blade hinge (4). The top blade (2) is agitated crossways that one. The top blade is moving by the help of a operating lever (1).

4.4 Operating elements

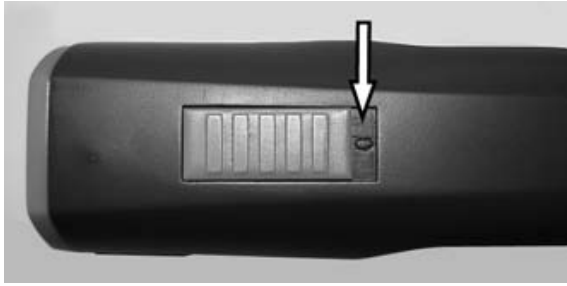


fig. 4 Switch in OFF-position ("0")

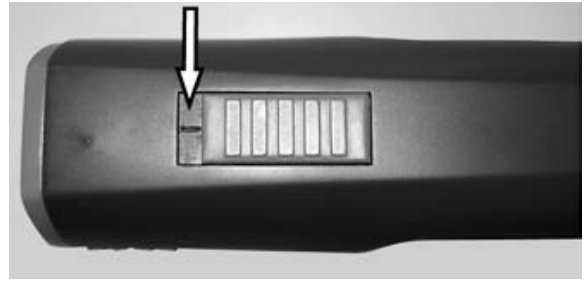


fig. 5 Switch in ON-position ("I")



fig. 6 Interlock clipperhead



fig. 7 Interlock battery

4.5 Charging station

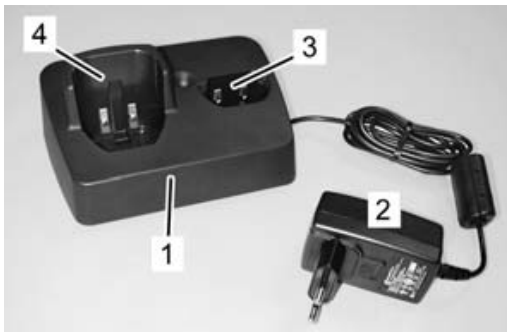


fig. 8

- 1 Charging station
- 2 Power adapter
- 3 Apart charging cavity for the battery
- 4 Charging cavity for the clipper with integrated battery

4.6 Batteries

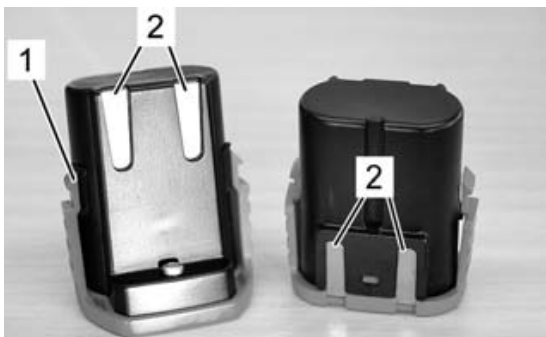


fig. 9

- 1 Interlock battery
- 2 Contacts

5 Transport, packaging and storage

Check the delivery on receipt immediately on completeness and damage in transit.



NOTE!

Complain any damage as soon as you discover it. Claims for damages only may be made within the valid time.

For the packaging, just non-polluting material is being used.

The case is intended to protect the different units against damage in transit, corrosion and other damages.

Store clipper and accessories on the following conditions:

- Always store in the provided case.
- Do not store outdoor.
- Store dry and dust-free.
- Protect against solar irradiation.
- Avoid mechanical shocks.
- Storage temperature: 0 until 40°C.
- Relative humidity: max. 75 %.
- When storing longer than 3 months, check periodically the general condition of all parts. If necessary, refresh or renew the conservation.

6 Operation



WARNING!

Incorrect operation may cause damage on persons or objects. Therefore:

- Do all the steps of operation according to the indications in this instruction manual.

6.1 Initial start-up

6.1.1 Setting up of the charging station

- Observe all technical data according to the operating conditions (3 Technical Data).
- The installation surface must be even and must dispose of sufficient stability and payload.
- The location of installation must be protected against humidity and rain.
- Power outlets in the outer area must be equipped with a residual current circuit breaker (FI).
- The workplace must dispose of sufficient illumination and ventilation.
- The location of installation must be out of reach of children.

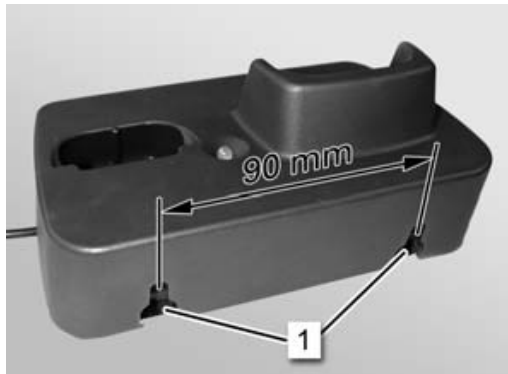


fig. 10

1. Place the charging station on a firm, even, dry, clean and free underground or fix it on the wall by the suspension leads on the back of the charging station (1) (diameter of screw 4,5 mm).
2. Plug the charging station in the power outlet.
3. The permanent light of the green LED signalises, that the plug is connected correctly to the power outlet and the charging station is ready for use.

6.1.2 Charging the batteries

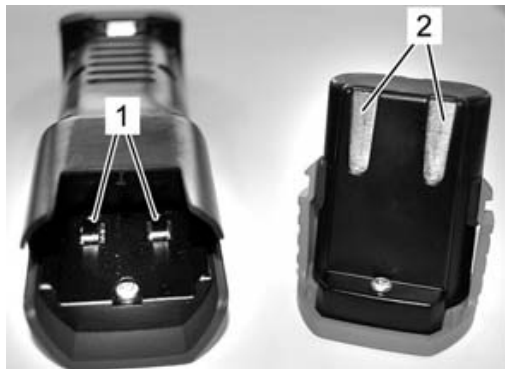


fig. 11

1. Test the contacts of the clipper (1) and the battery (2) for foreign particles and contamination.
2. Assure, that the switch of the clipper is in OFF-position ("0") (fig. 4).

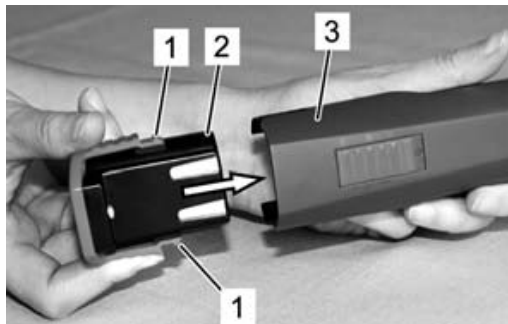


fig. 12

3. Insert the battery (2) in the clipper (3), until the battery interlock (1) is engaged on both sides.

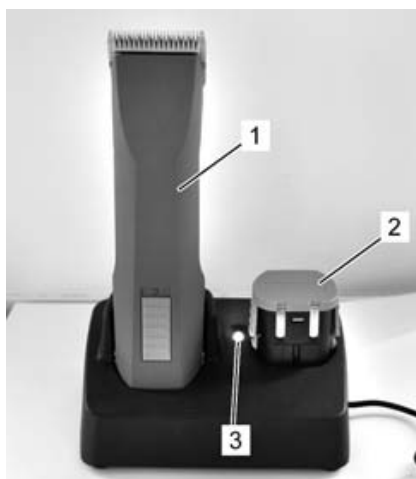


fig. 13

4. Put the clipper with the inserted battery (1) or spare battery (2) from above without force into the provided charging cavity of the charging station.
5. Await the charging time (3 Technical Data).
6. Battery is charging. During the charging time the control light is illuminating red (3). As soon as the battery is fully charged, the green control light will light up and the charger will switch to trickle charge.

**NOTE!**

If the clipper (1) and the spare battery (2) are standing simultaneously in the charging station, only the battery in the clipper (1) is charging.

The spare battery (2) is only charging when the clipper is taken out of the charging station.

7. Hold the charger firmly with one hand and pull the clipper (1) or the battery (2) out with the other.

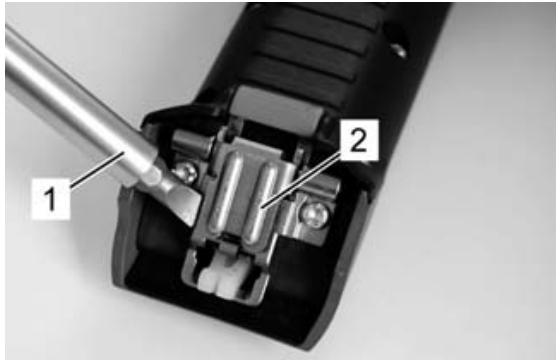
6.1.3 Fitting the clipperhead

fig. 14

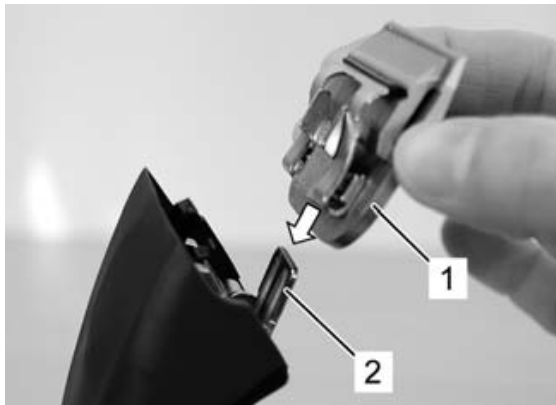


fig. 15

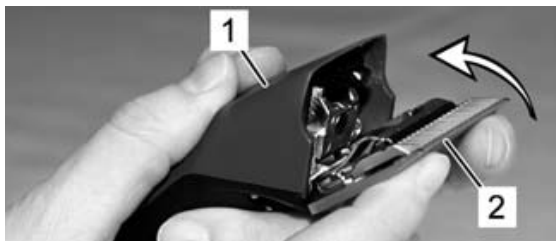


fig. 16



fig. 17

1. If the blade hinge (2) is closed inadvertently, open it by the help of a screwdriver (1).

2. Fit the clipperhead (1) on the open blade hinge (2).

3. Fold the clipperhead (2) by light pressure on to the clipper (1) which is switched on.

4. Make sure, that the clipperhead (1) is engaged firmly.

**NOTE!**

For proper operation make sure that the clipperhead (1) is engaged correctly.

6.2 Activities during operation

6.2.1 Clipping

1. Fix and calm the animal sufficiently before clipping.
2. Switch on the clipper already in the field of vision of the animal.
3. Approach to the animal from ahead.
4. During clipping, look at the behaviour of the animal.

6.2.2 Changing the batteries

When the battery is unloaded, the clipper is turned off by a protective circuit.

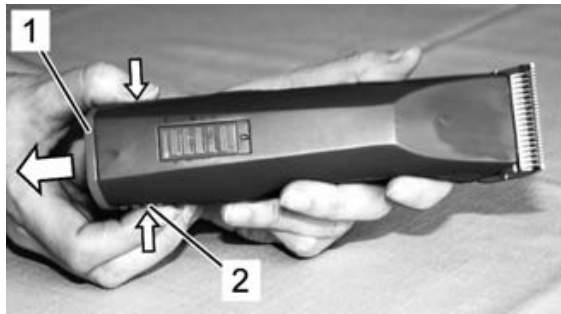


fig. 18

1. Move the switch to position "0" (fig.4).
2. Push the battery interlock (2) on both sides inward and pull the battery (1) out of the clipper.



fig. 19

3. Fit the loaded battery (1) in the clipper (2), till the battery interlock is engaged on both sides.

6.2.3 Changing the clipperhead



fig. 20

1. Move the switch to position "0" (fig. 4).
2. Push the clipperhead interlock.

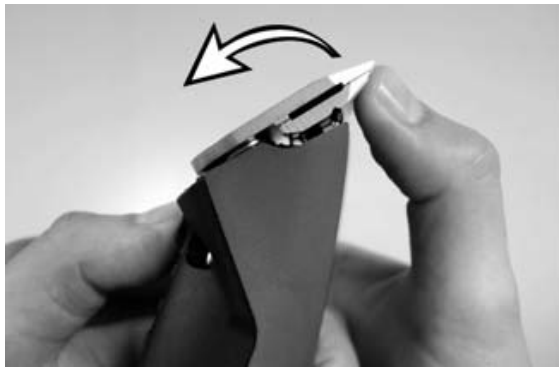


fig. 21

3. Fold the clipperhead ahead when the clipperhead interlock is pressed.
4. Take off the clipperhead.
5. Clean the opened hinge by the help of the provided brush.
6. Fit the favoured clipperhead to the blade hinge and fold it on to the switched-on clipper by light pressure. (fig. 15, 16, 17).



NOTE!

Only work with sharp blades, replace blunt or defective blades without teeth. The correct sharpening of blades is only to do by special machines or by a specialist. In that case, contact your service centre.

6.2.4 Lubrication

To receive good clipping results and to increase the durability of the clipper and the clipperhead, it is necessary to apply a thin oil coat between top and bottom blade (fig. 22).



ATTENTION!

Unsufficient lubrication of the clipperhead causes heating and a reduced durability of clipper and blades, as well as a reduction of the battery runtime. Therefore:

- Lubricate the blades sufficiently during the clipping (at least every 15 minutes), so that they do not drain (fig. 22).
- Only use the lubricants prescribed by the manufacturer.

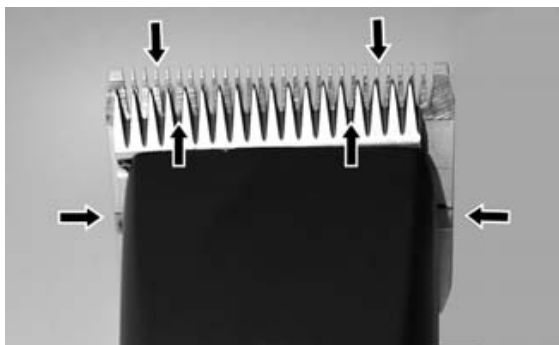


fig. 22



NOTE!

Only use our special oil or a paraffin oil meeting the ISO VG 15 specification.

The provided oil is non-toxic and produces no irritation on contact with the skin or the mucous membranes. This paraffin oil degrades to some 20% after 21 days (CEL-L-33-T-82).

The blades must be oiled before, during and after every use. When the blades of the clipper are leaving stripes or are running with reduced speed, this is a signal that oil is required. Place a few drops of oil ahead and laterally on the clipper blades (see arrows in fig. 22). Wipe off the excessive oil with a smooth, dry cloth. Lubrication sprays do not have sufficient oil for a good lubrication, but serve for cooling the blades. Immediately change damaged or crentated blades to avoid injuries.



ATTENTION!

Remove all the leaking, used up or excessive grease from all the lubrication points, and it is to be disposed in accordance with the local regulations.

6.2.5 Cleaning

To receive good clipping results and to increase the durability of the clipper and the clipperhead, it is necessary to apply a thin oil coat between top and bottom blade (6.2.4 Lubrication).

Clipperhead and hinge

Clean clipperheads und hinge between the different clippings.

Charging station

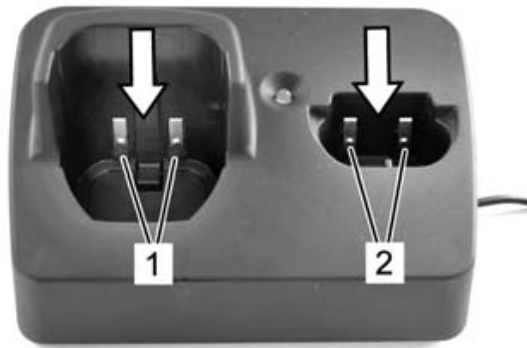


fig. 23

1. Disconnect the charging station from the power supply.
2. If necessary, take away hairs from both charging cavities.
3. If required, clean the contacts (1) and (2) with a dry cloth.

Contacts

If required, clean the contacts of the batteries and the clipper with a dry cloth.



NOTE!

When not in use daily, store the clipper and charging station in the provided case. When in use daily, we recommend to put clipper and reserve battery in the charging station.

7 Troubleshooting

- The here described tasks for troubleshooting can be done mostly by the operator.
- Some tasks only may be done by especially trained personal or by an authorised service centre. These tasks are marked with (S).

MALFUNCTION	CAUSE	RECTIFICATION
Top blade does not move	Clipperhead is not well engaged	Engage the clipperhead correctly when the motor is running
	Drive carrier is defective	Replace drive carrier (S)
Clipper cuts badly or not at all	Clipper blade is blunt	Have top and bottom blades resharpened by service centre (S)
	Clipper blades have not been correctly ground	
	Clipper blades are not oiled	Oil clipper blades every 15 minutes
	The animal's hair is wet	Only clip dry hair
	Hairs jammed between top and bottom blades	Take off clipperhead, push the top blade half away from the clipperhead, take away hairs between top and bottom blade.
	Clipperhead has too little clipping pressure	Have clipperhead inspected (S)
Motor is not running	Battery flat	Charge battery
	Contacts dirty	Switch clipper off and clean the contacts
	Faulty battery	Replace battery (S)
	Smell of burning from the motor housing. Motor burned out.	Have motor and / or electronics replaced (S)
	Motor and / or electronics faulty	Have motor and / or electronics replaced (S)
	Clipperhead blocked	Clean and oil clipperhead
Motor runs very slowly	Clipper blades were not oiled sufficiently	Oil clipper blades
Running time of a fully charged battery is too short and / or blades are getting hot	Clipper blades were not oiled sufficiently	Oil clipper blades
	Flat, not fully charged or faulty battery is being used	Only use intact, fully charged original batteries
The control light of the charging station is not on	Charging station is not connected to the power supply	Connect the charging station to the power supply
	Charging station is faulty	Have charging station inspected (S)
When battery is unloaded the light does not change from green to red	Contacts dirty	Clean contacts
	Faulty battery	Replace battery (S)
	Contacts of the charging station are deformed	Have the charging station repaired (S)

8 Spare parts

See illustration spare parts at the end of this instruction manual.



WARNING!

Faulty spare parts may cause damages, malfunctions or total loss and may reduce security. Therefore:

- Only use original spare parts of the manufacturer. Purchase the spare parts at the official distributor or directly at the manufacturer.
- If using no original spare parts all warranty and service claims are expiring.

Pos. No.	Indication	Quantity
	Clipper	
	Charger unit	
1	Motor housing upper, incl. switch lever	1
2	Motor housing lower, incl. pins	1
3	Battery Li-Ion	1
4	Motor complete	1
5	Electronics for clipper	1
6	Rubber tap	1
7	Turning lever	1
8	Seal	1
9	Circlip Ø3,2	1
10	Washer Ø4x0,5	1
11	Eccentric cogwheel, pre-assembled	1
12	Cylinder pin Ø4x31,5	1
13	Cylinder pin Ø5h6x18	1
14	PT-screw Kombitorx KA30x16	12
15	Blade support	1
16	Blade interlock	1
17	PT-screw Kombitorx KA30x8	1
18	Clipping pressure spring	1
19	Blade guidance	1
20	Clamp holder	1
21	Top blade	opt.
22	Bottom blade	opt.
23	Screw M3,5x4	2
24	Upper housing to charger unit	1
25	Power adapter with charging electronics	1
26	Baseplate to charger unit	1
27	Rubber foot	4
28	Plug EU	opt.
29	Plug AU	opt.
30	Plug GB	opt.
31	Plug US	opt.
32	Case with inlay	1
33	Oil dispenser	1
34	Cleaning brush	1
35	Instruction manual	1

9 Disposal



ATTENTION!

Environmental damages when disposing incorrectly!

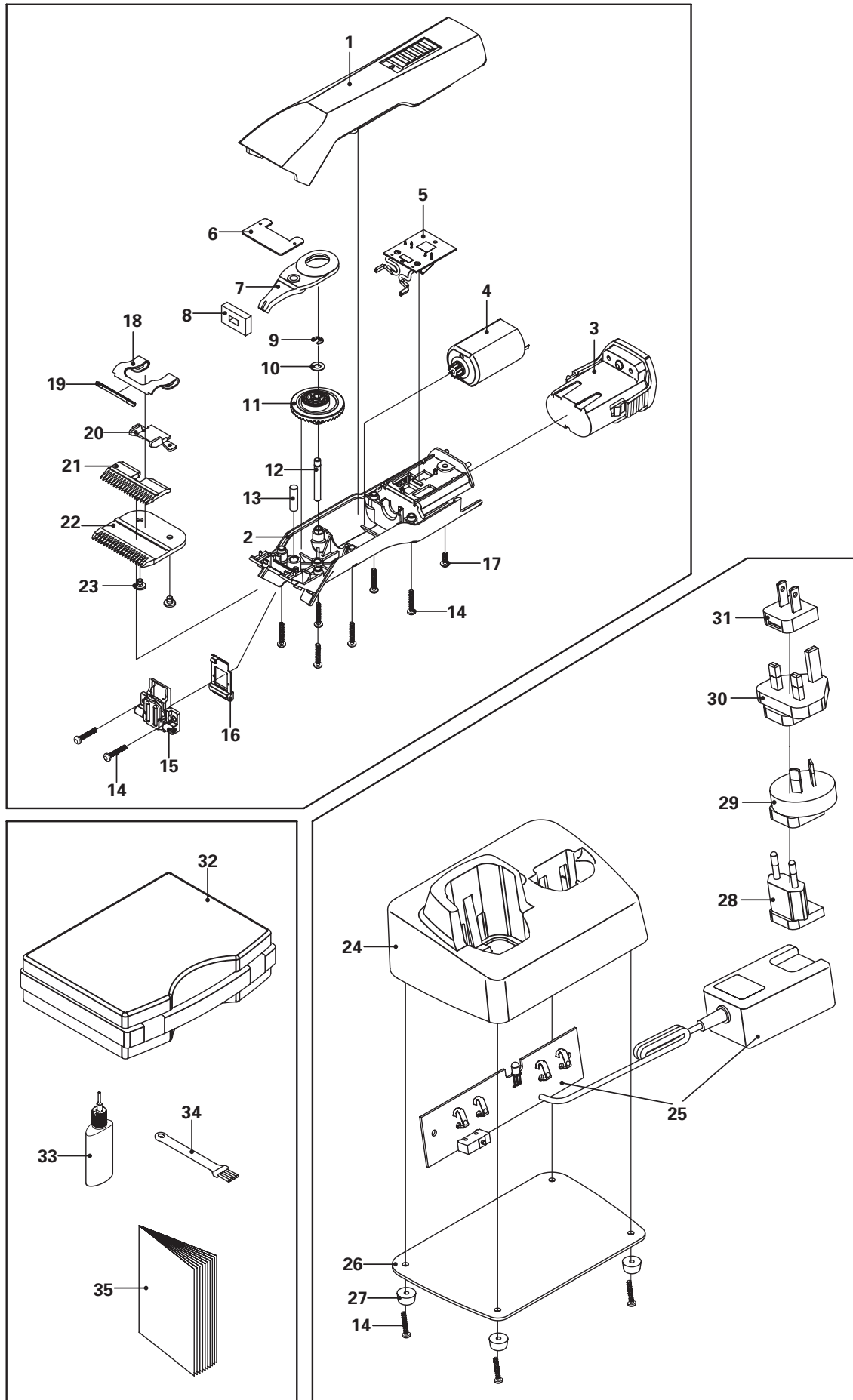
Electronic waste, batteries, lubricants and other additives are subject to the treatment of hazardous waste and only may be disposed by specialised centres.



NOTE!

For disposal hand the clipper and charging station over to a nearby service centre or specialist shop for electronics.





Warranty

Artikel Item Article Articolo Artículo Artico	Artikel Artikel Artikel Artikkel Tuote Προϊόν	
Serien Nr. Serial no. No. de série No. di serie No. de serie No. de série	Serie nr. Serie Nr. Serienr. Serie nummer Sarjanro Αρ. σειράς	
Kaufdatum Date of purchase Date d'achat Data di vendita Fecha de compra Data de compra	Datum van aankoop Købsdato Köpdatum Kjøpsdato Ostopäivä Ημερομηνία αγοράς	
Stempel und Unterschrift Stamp and signature Cachet et signature Timbro e firma Sello y firma Carimbo e assinatura Stempel en handtekening Stempel og underskrift Stämpel och namnteckning Stempel og underskrift fra forretningen Myyjän leima ja allekirjoitus Σφραγίδα και υπογραφή		

Änderungen und Verbesserungen im Sinne des technischen Fortschrittes vorbehalten.

We reserve the right to make technical changes and improvements without notice.

Nous nous réservons le droit de modifier ou d'améliorer nos produits sans avis préalable.

Salvo modifiche e miglioramenti nel senso del progresso tecnico.

Nos reservamos el derecho de realizar cualquier cambio o mejora técnica.



This piece of equipment complies with directive:
73/23/EEC, incl. amendments
89/336/EEC, incl. amendments
93/68/EEC
92/31/EEC
93/86/EEC



Dieses Gerät entspricht folgenden Richtlinien:
73/23/EWG, inkl. Anhänge
89/336/EWG, inkl. Anhänge
93/68/EWG
92/31/EWG
93/86/EWG

Cet appareil est conforme aux directives suivantes:
73/23/CEE, incl. amendements
89/336/CEE, incl. amendements
93/68/CEE
92/31/CEE
93/86/CEE